

INDUSTRIAL VISION

SODEREL



30 years at your service



INDUSTRIAL VISION

The industrial vision consists in reproducing as accurately as possible human visual perception by means of an optical sensor combined with a data processing system.

To guarantee to its customers the quality and the reliability of its products and its services, Soderel makes confidence with the material of Omron.

Our laboratory

Within our laboratory of vision, we carry out feasibility studies of quality control using an industrial vision system.

This system which is in our buildings, is composed of various types of high-frequency or LED lighting and of lens for our camera.

Installed in a box, it also enables us to carry out tests on site at the time of the presentation of a quality control solution by vision.

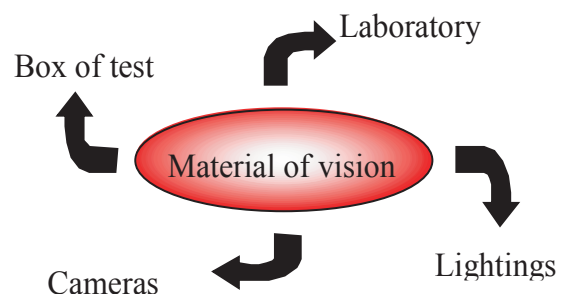
Our laboratory has two vision systems F150 and F160, as well as lenses of different focal lengths of the mark OMRON.

Any feasibility study requires to realize in collaboration with our customers a specifications sheet to define the working environment as well as the characteristics of the good and bad parts.

Our teams follow regularly training courses in order to ensure to our customers a perfect integration of the used systems.



Our laboratory



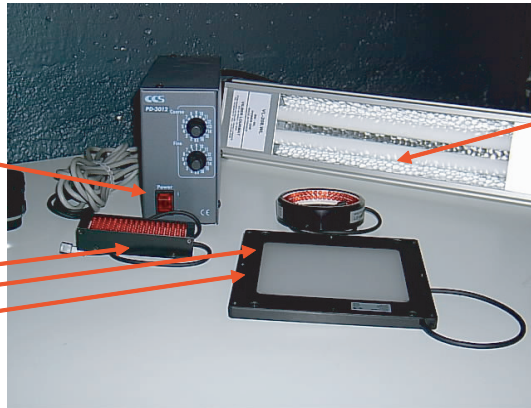
INDUSTRIAL VISION

Our equipment for test on site

. Lightings

Supply of the lighting
Red LED

Lighting with
red LED



High-frequency
lighting

. Cameras

12,5 mm lens

25 mm lens

16 mm lens

Camera F150 with
8 mm lens



. Box of test

Our box of test, easily transportable, enables us to carry out tests on site. It includes a central unit F150 and F160 from Omron.



INDUSTRIAL VISION

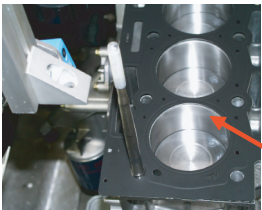
Our service

Soderel commits itself to make for each offer a specific feasibility study and offers to you a reliable and fast answer, for:

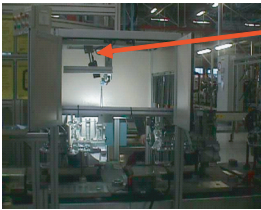
- the realization of an application,
- the sale of material (cameras, industrial lightings),
- the training, the audit and the expertise,
- the maintenance of the existing system.

Example of achievements

Conformity check of the cylinder head gasket of the engines at PSA Tremery factory



Head gasket



Camera F150



Tunnel of vision

Material:

- Vision system F150
- Camera F150
- White linear high-frequency lighting

Need: Check of the agreement of the joint regarding the engine

Solution: A camera checks the presence of punching on the joint compared to the transmitted informations by the memory of the skid.

Integration of the control system on an existing manual post

Customers benefits:

- Simplification of the operator station
- Less visual monitoring
- It informs the operator at the time of the installation of an incorrect joint.

Example of achievements

- . Check of the product presence before packing
- . Control of locks
- . Control of conformity of tapping
- . Control of valves engine

A network

WEST Area

Rennes

Fax. +33(0)299 771 290

agence.rennes@soderel.com

EAST Area

Sochaux

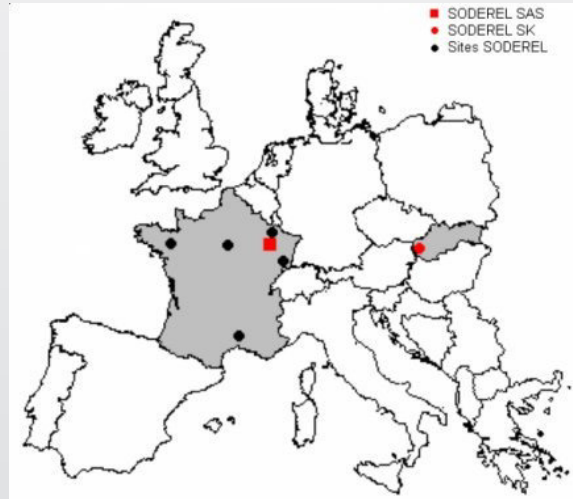
Fax. +33(0)381 945 280

agence.sochaux@soderel.com

Pont -à-Mousson

Fax. +33(0)383 812 567

e.girardot@soderel.com



ILE DE FRANCE

Aulnay-sous-Bois

Fax. +33(0)148 657 045

agenceparis@soderel.com

SODEREL SAS

10, rue du coteau - Z.I. Ouest

F- 54180 Heillecourt

Tel. +33(0)383 55 66 66

Fax. +33(0)383 55 66 67

SOUTH Area

Tarascon

Fax. +33(0)490 915 389

agence.sud@soderel.com

SODEREL SK

(Slovakia)

Modra

Tél. +421 336 474 341

Fax. +421 336 474 378

soderel.sk@soderel.com